

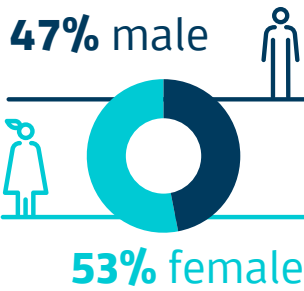
# Patients' perceptions of equality, diversity and inclusion within the chiropractic profession\*



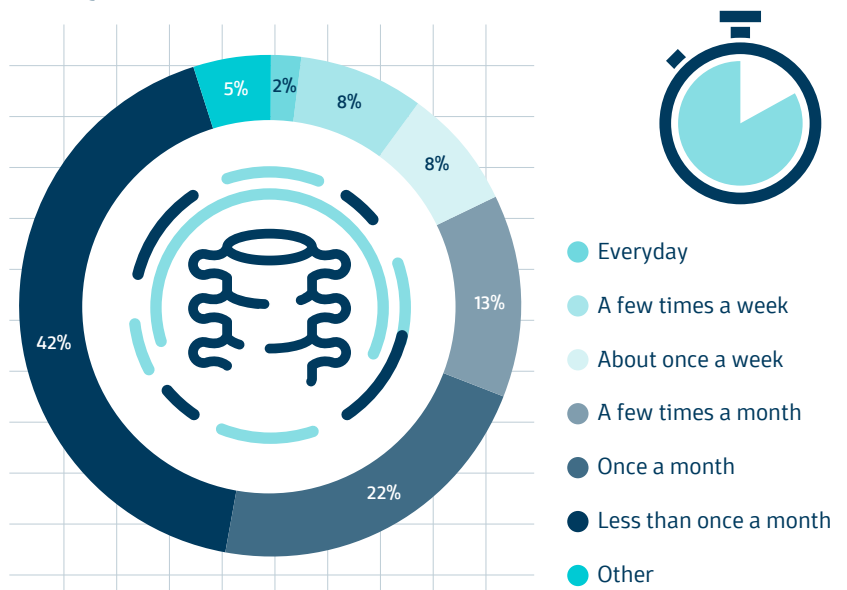
## BREAKDOWN OF RESPONDENTS

**54**  
median age

**16%**  
have a  
disability



## FREQUENCY OF CHIROPRACTIC VISITS

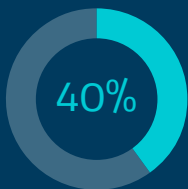


## EXPERIENCES OF DISCRIMINATION

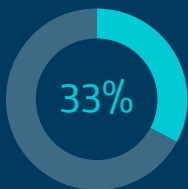


**1 in 10 patients** have experienced discrimination or bias when visiting a chiropractor

Of these patients, discrimination took place for



when considering receiving treatment or a consultation from a chiropractor



when receiving treatment or a consultation.

Patients between the ages 20-49 are more likely to report discrimination.

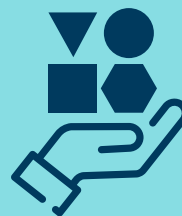


Patients who visit a chiropractor on a more frequent basis e.g. a few times a week are more likely to report discrimination.

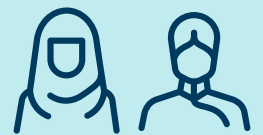


## IMPORTANCE OF EDI

**85%** are familiar with the concept of EDI



**54%** believe that the chiropractic profession adequately represents diverse communities



**71% agree** that EDI is important to the chiropractic profession



**68% agree** that EDI should be reflected in the policies and practices of chiropractic clinics



**General Chiropractic Council**

\*Based on 510 responses from patients who self reported visiting a chiropractor in the last 12 months.