

2025
UPDATED
EDITION

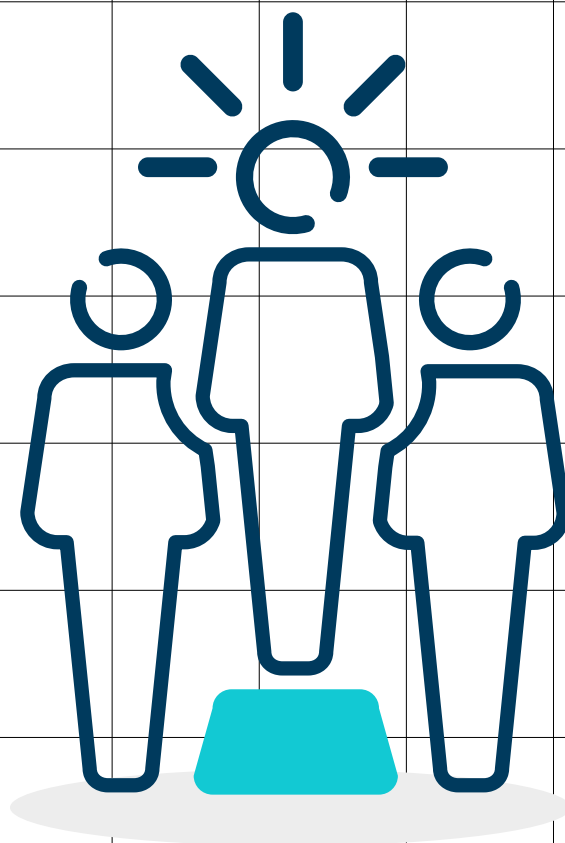


GCC Registrant Toolkit

Enhancing Patient Care Through Leadership

Professionalism in chiropractic

Toolkit



Enhancing patient care through leadership

Leadership is a quality that every chiropractor can demonstrate, regardless of role, setting or career stage. It is not limited to managing or supervising others but is reflected in the way you act every day, through your professionalism, collaboration, and a commitment to patient safety. Effective leadership means working well with colleagues and other health professionals, setting a positive example, fostering a culture of respect and openness and addressing poor behaviour where it arises.

By showing leadership in this way, chiropractors help to create safe, supportive workplaces where patients receive the best possible care and colleagues feel valued and encouraged.

Leadership in the Code of Professional Practice



As a healthcare professional you must foster collaborative healthcare, effective professional relationships and safe, supportive workplace practice.

The following Principles, Standards and Glossary definitions may also be relevant:

H4 demonstrate leadership appropriate to a healthcare professional and to your role.

Other Standards within Principle H and I of the Code of Professional Practice.

I4 maintain and develop your competence and performance, taking part in relevant and regular learning and professional development activities. You must be competent in all aspects of your professional work, including in any formal leadership, management, research or teaching role.

I7 Do not allow another person you employ, manage or lead to take on responsibility for the clinical assessment or care of a patient where it is beyond their level of knowledge, skills, or experience.

Professionalism through leadership

TOP TIPS:



Work collaboratively

Build effective, respectful relationships with colleagues and other health professionals to deliver excellent patient care.



Show leadership in your role

Leadership is not just about managing others but about setting a positive example, fostering teamwork, and contributing to improvements in care and services.



Promote a positive culture

Treat colleagues fairly, challenge poor behaviour, and create an environment where concerns can be raised safely.



Safeguard standards

Act quickly if you become aware of behaviour or performance that puts patients or colleagues at risk.



Support others' development

Where appropriate, contribute to mentoring, teaching, or training to help colleagues and students meet their professional and regulatory requirements and deliver improved outcomes for patients.



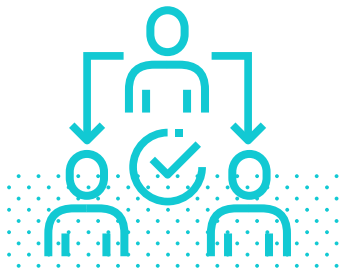
Never stop learning

Demonstrate a commitment to ongoing learning and professional development by keeping competencies and knowledge up to date.



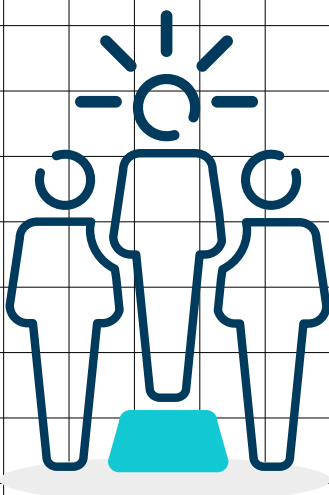
Lead with empathy and openness

Effective leaders listen actively, seek feedback, and take time to understand the challenges their colleagues face. By showing empathy and responding without judgement, you create a culture of care and respect where colleagues feel valued, supported, and able to contribute openly.



Delegate safely and responsibly

If tasks are delegated, always ensure they are appropriate to the person's knowledge, skills, and experience. Provide the right level of supervision and support, and never allow anyone you lead or manage to take on responsibility for patient care that is beyond their competence.



Simple steps to effective leadership



1. Open lines of communication

- Listen actively, seek feedback, and understand colleagues' challenges
- Promote a positive culture by treating colleagues fairly and creating an environment where concerns can be raised safely

2. Professional Development

- Set an example by keeping up to date with competencies and knowledge
- Support the professional development of colleagues
- Share learnings and knowledge

4. Collaborate

- Build effective, respectful relationships with colleagues and other health professionals. Encourage sharing of ideas, experiences and perspectives
- Embrace the strengths of colleagues and other healthcare professionals
- Set a positive example, fostering teamwork, and contributing to improvements in care and services

3. Set expectations

- Create a culture of trust and respect
- Demonstrate the behaviour and attitude for others to follow
- Match delegated tasks to competence, and provide the right level of supervision and support
- Act quickly if you become aware of poor performance or behaviour that puts others at risk

How would you rate this document?



Click a face, or scan the QR code to share your views



General Chiropractic Council
Park House
186 Kennington Park Road
London
SE11 4BT

Telephone: +44 020 7713 5155
Website: www.gcc-uk.org
Twitter: @GenChiroCouncil
W3W: gains.fairly.rang

